

Chyenne

6. What is 1,316 divided by 4?
- A. 320
 - B. $320 \text{ r } 9$
 - C. $329 \text{ r } 4$
 - D. 329
7. Samantha has \$60 to spend on video games. She buys one video game for \$32. With the money she has left over, how many \$8 games can Samantha buy?
- A. 1 game
 - B. 2 games
 - C. 3 games
 - D. 4 games
8. Sixteen chocolate bars and 72 Starbursts were distributed evenly among 5 students, with each student receiving the same amount of candy. What is the largest number of whole pieces each student could have received?
- A. 14
 - B. 15
 - C. 17
 - D. 3

9. Which expression confirms that the answer to $5,505 \div 6 =$ _____?

A. $(6 \times 937) + 3$

B. $(6 \times 927) + 3$

C. $(6 \times 917) + 3$

D. $(6 \times 907) + 3$

10. A group of 175 campers and 19 counselors want to take boats out on the lake. If each boat holds 3 people, how many boats will the group need?

A. 52 boats

B. 62 boats

C. 64 boats

D. 65 boats

11. What is $6,261 \div 3$? _____

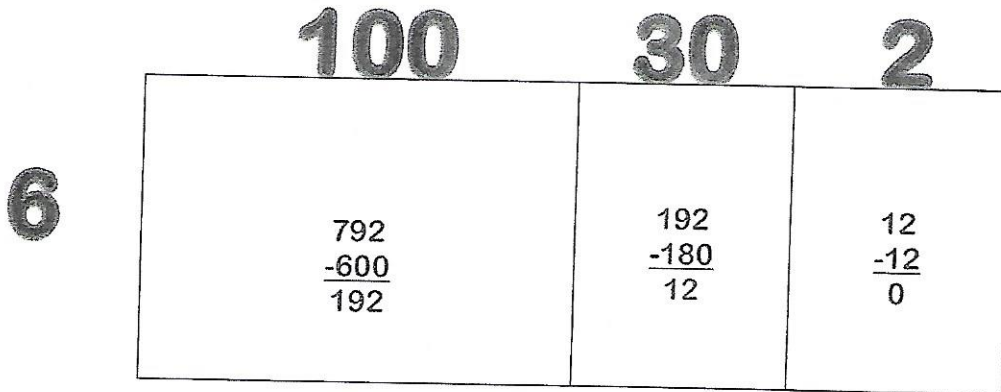
	/	/	/	/	/	
-	+	*	÷	÷	*	+
0	0	0	0	0	0	0
1	1	1	1	1	1	1
2	2	2	2	2	2	2
3	3	3	3	3	3	3
4	4	4	4	4	4	4
5	5	5	5	5	5	5
6	6	6	6	6	6	6
7	7	7	7	7	7	7
8	8	8	8	8	8	8
9	9	9	9	9	9	9

Answer Key

1. What is $2936 \div 8$?

367

2. Use an area model to divide 792 by 6?



Answer: 132

3. Select all the expressions that have a value of 30.

- A $300 \div 10$
- B $350 \div 15$
- C $450 \div 15$
- D $100 \div 4$
- E $120 \div 4$

$$\begin{array}{r}
 5 \\
 60 \\
 200 \\
 1,000 \\
 \hline
 5 \overline{) 6,325} \\
 \underline{- 5,000} \\
 1,325 \\
 \underline{- 1,000} \\
 325 \\
 \underline{- 300} \\
 25 \\
 \underline{- 25} \\
 0
 \end{array}
 \left. \vphantom{\begin{array}{r} 5 \\ 60 \\ 200 \\ 1,000 \end{array}} \right\} \underline{1,265}$$

4. Gabriella divided 6,325 by 5 as follows:

Can you explain how Gabriella completed this problem using partial quotients?

Possible answer: Gabriella used place value to help solve her problem while using partial quotients. She multiplied the divisor by 1,000, 200, 60, and 5.

5. Six 4th grade classes had a book drive to build their class libraries. Using the chart below, if the books are divided equally between the classes, how many books would each class receive?

Days of the Week	Books Collected
Monday	240
Tuesday	171
Wednesday	232
Thursday	239
Friday	114

166 books per class